

Historic, Archive Document

Do not assume content reflects current scientific knowledge, policies, or practices.

S. & W. Co.'s Giant-Flowered Pansies

PASTORAL GIANTS

(Regular Strain)

We recommend this strain as the finest we have ever seen. The blooms are large, heavy, and are well above the foliage on strong stems.

Bronze Shades
Fancy Red Shades
Pure Golden Yellow
Pure Snow-White
Emperor William Blue (dark)
Lavender (light)
Yellow, Dark Eye
Mixed

Each of the above varieties, Trade Pkt.
75 cts., $\frac{1}{16}$ oz. \$1.25, $\frac{1}{8}$ oz. \$2, $\frac{1}{4}$ oz. \$3.50,
 $\frac{1}{2}$ oz. \$6, oz. \$12, $\frac{1}{4}$ lb. \$44.

SUPER-PASTORAL GIANTS

This superb strain of giant fancy Pansies is the culmination of years of scientific Pansy culture. A vigorous root system enables it to bloom well into the hottest weather. Flowers are round, of immense size, firm texture and have strong stems.

Pure Golden Yellow
Pure Snow-White
Lavender (light)
Emperor William Blue (dark)

Each of the above, Trade Pkt. \$1, $\frac{1}{16}$ oz.
\$2, $\frac{1}{8}$ oz. \$3.50, $\frac{1}{4}$ oz. \$6, oz. \$20.

FINEST MIXED. Trade Pkt. 75 cts.,
 $\frac{1}{16}$ oz. \$1.75, $\frac{1}{8}$ oz. \$3, $\frac{1}{4}$ oz. \$5, oz. \$17.50.

STUMPP & WALTER CO.'S EXHIBITION STRAIN

This mixture has been especially prepared, with blooms of large size, splendid texture, and plants of robust constitution, holding their blooms well above the foliage. Every conceivable color has been included. Trade Pkt. 75 cts., $\frac{1}{16}$ oz. \$1.25, $\frac{1}{8}$ oz. \$2, $\frac{1}{4}$ oz. \$3, $\frac{1}{2}$ oz. \$5, oz. \$10.

STUMPP & WALTER CO.'S NON PLUS ULTRA

A carefully prepared mixture of every conceivable color and combination of colors that exist in this highly meritorious flower although not up to the standard of our Pastoral Giants. Trade Pkt. 60 cts., $\frac{1}{16}$ oz. \$1, $\frac{1}{8}$ oz. \$1.50, $\frac{1}{4}$ oz. \$2.50, $\frac{1}{2}$ oz. \$4, oz. \$8.



Pansy, Pastoral Giants

SUPER-SWISS GIANTS, MIXED

Contains a very good selection of colors; large flowers with dark centers.

Trade Pkt. 75 cts., $\frac{1}{8}$ oz. \$1.50, $\frac{1}{4}$ oz. \$2.75, oz. \$10, $\frac{1}{4}$ lb. \$32.

SAWCO *Stupendous Pansies*

IMPROVED STRAIN

FOR GREENHOUSE CULTURE

Remarkable Strain of Gigantic Proportions

WE HAVE acquired the entire stock of seed of these wonderful Pansies, developed through many years by a prominent grower. The plants are veritable bushes, growing 4 feet high. Carried on thick, stiff stems, 1½ feet long, are enormous flowers 4 to 4½ inches in diameter, and in a complete color-range; included are both multicolor blooms and selfs, and among the latter are pure yellow.

Seed will be ready in July, and as the supply is limited, we suggest that you place your order now. These will be filled in the rotation in which we receive them until the supply is exhausted.

Trade Pkt. \$2, 3 pkts. \$5

Photograph of a plant grown in a pot showing vigor and free-flowering habit of this strain. Seed sown July 20. First flower appeared November 25. Up to May 15 plant has produced 305 blooms. →→→



CALENDULA

CUT-FLOWER MIXTURE. A special mixture containing all colors and types such as Chrysantha, Fantasy, Shaggy, etc. ¼oz. 30 cts., oz. \$1, ¼lb. \$3.50.

CAMPFIRE (Sensation). The best forcing Calendula. Blooms are flat and larger than those of any other type. The color is brilliant orange, with a scarlet sheen and a full yellow center. ¼oz. 30 cts., oz. \$1, ¼lb. \$3.50.

CHRYSANTHA. The stems are remarkably long and the flowers resemble the chrysanthemum, from which it derives its name. The florets are long, wide and drooping, giving the large, double, buttercup-yellow flowers a globular outline. ¼oz. 20 cts., oz. 75 cts., ¼lb. \$2.50.

BALL'S APRICOT. Brown or straw color, dark center; medium-long stem.

BALL'S ORANGE IMPROVED. Deep orange; long stem.

BALL'S GOLD IMPROVED. Deep golden yellow; long stem.

BALL'S MASTERPIECE. Deep orange, dark center; long stem.

BALL'S SUPREME. Light orange, dark center; medium-long stem. Each of the above, ¼oz. 30 cts., oz. \$1, ¼lb. \$3.50.

CINERARIA

CREMER'S PRIZE STRAIN, IMPROVED. Conceded by many experienced Cineraria growers to be the greatest improvement in this important greenhouse annual developed in recent years. The flowers are large and the color-range exceptionally fine. Florets in most of the plants obtained from this strain are wide, and they overlap to form attractive heads. Its foliage is handsome, with smaller leaves than those of the old type. The plants are exceptionally resistant to wilt. Trade Pkt. \$1.50, ½oz. \$4, ¼oz. \$6.50, ⅛oz. \$11.

CALIFORNIA SUPER-GIANTS. This strain of prize Cineraria produces numerous individual flowers exceeding 5 inches in diameter, with petals 1 to 1½ inches wide. The giant blossoms are borne in immense, compact trusses, with dark green foliage on well-formed plants. Mixed. Includes all shades, trade pkt. \$1, ½oz. \$3, ¼oz. \$5, ⅛oz. \$9.

MULTIFLORA NANA, POTSDAM. An extra-choice strain. Mixed. Trade Pkt. \$1, ¼oz. \$2.50, ½oz. \$4.

S. & W. CO.'S STELLATA. Delicate, star-like blooms are borne in great profusion on long stems. It is excellent for cutting as well as decorative purposes; all shades. Tall Mixed. Trade Pkt. \$1, 3 pkts. \$2.50.

CINERARIA, continued

SITER'S RAINBOW STRAIN. Although it carries immense flower heads, its compact growth and small round leaves require little room. Medium large flowers, ranging from the bright-eyed types to the finer pastel shades. Trade Pkt. \$2.

CALCEOLARIA

S. & W. CO.'S GIANT-FLOWERING MIXED. A grower of international reputation grows the seed of this excellent greenhouse plant for us, and we feel confident that this strain cannot be excelled. Trade Pkt. \$1, 3 pkts. \$2.50, ¼oz. \$3.50.

Hybrida Multiflora Nana

INDIAN PRINCE. A Multiflora Nana selection; bright scarlet flowers. Trade Pkt. \$1, ¼oz. \$3.50, ½oz. \$6.

CLOTH OF GOLD. Medium-sized flowers of pure golden yellow. Trade Pkt. \$1, ¼oz. \$2.50, ½oz. \$4.

MIXED. Florets about 1½ inches, produced in abundance. They grow from 10 to 12 inches tall. Colors range through shades of yellow, orange and brown. Trade Pkt. 75 cts., 3 pkts. \$2, ¼oz. \$3.50, ½oz. \$6.

Delphiniums

GIANT PACIFIC HYBRIDS

The new Giant Pacific Hybrids are so much larger and finer than the best varieties produced hitherto that they have deeply impressed all who have seen them. All the florets are two inches or more across, and they are excellent for show purposes. Each of the following, except Clear White, has a marked resistance to mildew.

BLACK KNIGHT SERIES. Very dark blue. Individual flowers of beautiful round form, with heavy texture.

BLUE JAY SERIES. Clear medium blue with dark bee.

BLUE BIRD SERIES. Clear medium blue with white bee.

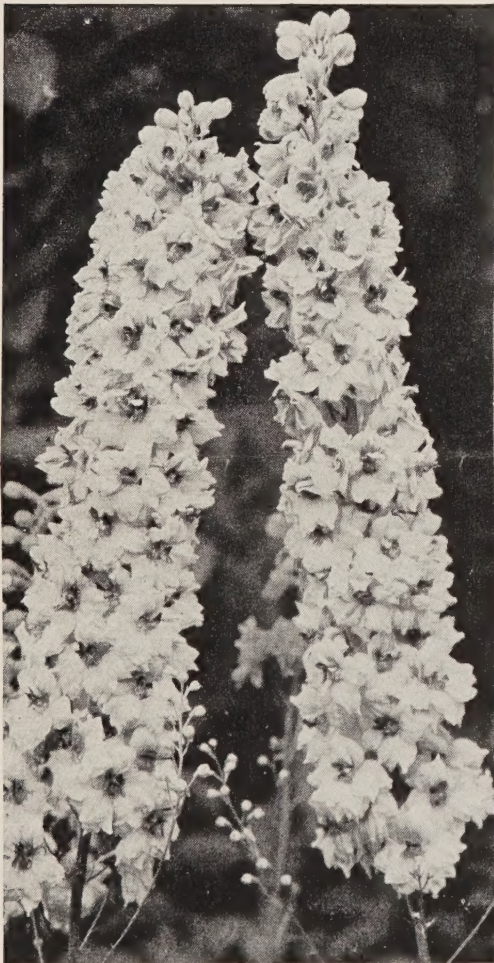
CAMELIARD SERIES. A pure lavender self, with white base.

GALAHAD SERIES. Clear white flowers with a very heavy glistening texture, pyramidal spikes with well-spaced flowers.

GUINEVERE SERIES. Light pink-lavender self with white bee. Individual florets $2\frac{1}{2}$ to 3 inches in diameter; large spikes. Color similar to Stock, Silvery Lilac.

KING ARTHUR SERIES. Brilliant royal violet with large white bee. Individual florets $2\frac{1}{2}$ inches in diameter. Long graceful spikes.

ROUND TABLE SERIES. Noble mixture.



Delphiniums, Giant Pacific Hybrids

SUMMER SKIES SERIES. Clearest light blue with white bee. Florets $2\frac{1}{2}$ inches in diameter.

Each of the preceding 9 varieties, Trade Pkt. \$1.25, $\frac{1}{8}$ oz. \$2.50, $\frac{1}{4}$ oz. \$4, oz. \$14.

CLEAR WHITE. Clear glistening white with heavy texture. Individual florets 2 to $2\frac{1}{2}$ inches in diameter.

MIXTURE OF ALL SHADES. This mixture contains a blend of all the above varieties as well as many others not offered separately.

Each of the above two, Trade Pkt. \$1, $\frac{1}{8}$ oz. \$2, $\frac{1}{4}$ oz. \$3.50, oz. \$12.

MISCELLANEOUS VARIETIES

S. & W. CO.'S SUPER GOLD MEDAL HYBRIDS.

Mixed. Includes all shades. Trade Pkt. 50 cts., $\frac{1}{4}$ oz. \$1, oz. \$3.50.

Belladonna. Clear turquoise-blue. Trade Pkt. 25 cts., $\frac{1}{4}$ oz. 75 cts., oz. \$2.50.

Belladonna Improved (Cliveden Beauty). Light blue. Strong grower. Trade Pkt. 25 cts., $\frac{1}{4}$ oz. 85 cts., oz. \$3, $\frac{1}{4}$ lb. \$10, lb. \$35.

Bellamosa. Dark blue. Trade Pkt. 25 cts., $\frac{1}{4}$ oz. 75 cts., oz. \$2.50.

Chinense, Cambridge Blue. Rich blue, $2\frac{1}{2}$ ft. Trade Pkt. 25 cts., $\frac{1}{4}$ oz. 75 cts., oz. \$2.50.

Chinense, Blue (Blue Butterfly). Distinct variety growing about $1\frac{1}{2}$ feet high. Fine, feathery foliage; large flowers of true gentian-blue. Trade Pkt. 15 cts., $\frac{1}{4}$ oz. 30 cts., oz. \$1.

Cardinale. Cardinal-scarlet. $1\frac{1}{2}$ ft. Trade Pkt. 35 cts., $\frac{1}{4}$ oz. \$1.50, oz. \$5.



Begonia

NEW HOLLYHOCK STRAIN. A fine mixture of all light shades, pale clear blue predominating. Large flowers, truly double, are well placed on long, pyramidal spikes. Their sturdy appearance reminds one of the Hollyhock, hence the name. Trade Pkt. 50 cts., $\frac{1}{8}$ oz. \$1, $\frac{1}{4}$ oz. \$1.75, oz. \$6.

Begonia

FIBROUS-ROOTED

TALL VARIETIES

Christmas Cheer. This variety bears flowers of enormous size, attaining a diameter of 2 inches, the plants being covered with a mass of blooms throughout the entire season. The color is a beautiful shade of bright cherry-red. This variety is particularly adapted for bedding purposes, being quite hardy, and will thrive in either full sun or partial shade.

Christmas Pink. Same as above, but color is a beautiful shade of bright pink. Either of above, Trade Pkt. (about 1000 seeds) \$1, $\frac{1}{64}$ oz. (about 5000 seeds) \$2, $\frac{1}{32}$ oz. \$3.50.

Zahringer. The flowers are from an inch and a half to two inches across, are rose-pink shading to white in the center. Trade Pkt. \$1, $\frac{1}{64}$ oz. \$2, $\frac{1}{32}$ oz. \$3.50.

Coral Prize. Similar to Christmas Pink in habit, but it is a deep coral-pink self. Trade Pkt. \$1, $\frac{1}{64}$ oz. \$2, $\frac{1}{32}$ oz. \$3.50.

Isle de France. Identical to the above, but flowers are pure white. Trade Pkt. \$1, $\frac{1}{64}$ oz. \$2, $\frac{1}{32}$ oz. \$3.50.

INTERMEDIATE VARIETIES

Indian Maid. Deep blackish brown foliage and brilliant orange-scarlet flowers of about one inch in diameter.

Carmen. Similar to Indian Maid in type. The flowers are clear pink and the foliage is a dark, shining green. Each of the above 2 varieties, Trade Pkt. \$1, $\frac{1}{64}$ oz. \$2, $\frac{1}{32}$ oz. \$3.50.

Luminosa. One of the most popular varieties. Dark fiery scarlet. Trade Pkt. \$1, $\frac{1}{64}$ oz. \$3, $\frac{1}{32}$ oz. \$5.50, $\frac{1}{16}$ oz. \$10.

Prima Donna. Light pink shaded carmine. Trade Pkt. \$1, $\frac{1}{64}$ oz. \$2, $\frac{1}{32}$ oz. \$3.50, $\frac{1}{16}$ oz. \$6.

DWARF VARIETIES

King of the Reds. Glowing red flowers, green foliage, and a vigorous but dwarf and compact habit make this variety valuable for pots or border work. Trade Pkt. \$1, $\frac{1}{64}$ oz. \$2.50, $\frac{1}{32}$ oz. \$4.50.

Luminosa Compacta. Very dwarf and compact. Dark fiery scarlet, free flowering. Trade Pkt. \$1, $\frac{1}{64}$ oz. \$3, $\frac{1}{32}$ oz. \$5.50, $\frac{1}{16}$ oz. \$10.

Pure White. In our estimation this is the best dwarf white for pot-plant use. Trade Pkt. \$1, $\frac{1}{64}$ oz. \$2.50, $\frac{1}{32}$ oz. \$4.50, $\frac{1}{16}$ oz. \$8.

Stocks . . .

One of the most popular Florist cut-flowers due to the ease with which they are grown; they require no disbudding.

Most varieties are available in sufficient quantities and we feel sure we are in a position to fill orders in full.



Stocks Non-Branching

Stumpp & Walter Co.'s Non-Branching

We are pleased to be able to offer this wonderful strain to the florists producing true one-stalk plants. The individual flower-spikes are erect and produce from 15 to 20 improved double blooms.

WHITE VARIETIES

Pure White. Our best pure white large florets, and well-formed, compact spikes.

Gardenia. An outstanding white. Late blooming.

PINK, RED and ROSE VARIETIES

Ball Supreme. Rich silvery rose, extra long, heavy spikes.

Deep Rose. Bright rose-pink.

Chamois Rose. Blending of creamy buff and pink.

Ruby. Crimson-red, fine long stems.

American Beauty. Similar to the American Beauty Rose.

BLUE, LAVENDER and PURPLE VARIETIES

Lilac Lavender. The most popular variety in this shade.

Silvery Lilac. A very attractive shade.

Purple. Deep purple with long stems.

Ball Blue. Rich lilac shade.

MISCELLANEOUS VARIETIES

Yellow Wonder. Deep creamy yellow.

Mixed. A special mixture consisting of all the popular colors.

Each of the above: 1/2 Trade Pkt. 60 cts., Trade Pkt. (app. 1200 seeds) \$1, 1/4oz. \$2.50, oz. \$9.

BRANCHING TYPE

Early Giant Imperial Improved Bismarck

We have found this strain so far superior to the Giant Perfection type that we have decided to discard the latter.

ANTIQUE COPPER. Hellebore-red.

APPLE BLOSSOM. Blush-pink.

BLOOD-RED.* Deep red.

BUTTERCUP. Rich deep yellow.

CHAMOIS-ROSE. Pale rose.

DARK BLUE. Deep blue.

ELK'S PRIDE. Royal purple.

LAVENDER. Pale lavender.

ROSE. Deep rose-pink.

SHASTA. New giant white.

MIXTURE. All colors.

Trade Pkt. above, each 50 cts., 1/4oz. \$1.25, oz. \$4.

Annual Larkspur

Giant Imperial Type

All these varieties have the characteristics of the Delphinium; that is, with the branching base and the long flower-stalk, superior to the old stock-flowered type.

BLUE SPIRE. Deep Oxford-blue—the most popular with the florist.

DAZZLER. Vivid lustrous carmine, blooming 7 to 10 days earlier.

EXQUISITE PINK IMPROVED. Delightful shade of pink.

GLORIA, IMPROVED. A rich tone of deep rose, with no trace of carmine.

LILAC KING. Clear lilac.

LILAC QUEEN. Rich lilac shading to lavender-blue. Essential for the florist.

PEACH BLOSSOM. A real clear light pink with no trace of salmon.

SWEET LAVENDER. A delightful shade of rich lavender-blue.

WHITE KING. A new, dazzling, pure white. Each of the above, Trade Pkt. 15 cts., 1/4oz. 35 cts., oz. \$1.10, (1/4lb. at the lb. rate), lb. \$11.

New cropseed ready in early September. We suggest early ordering for shipment at that time.



Larkspur, Giant Imperial

Snapdragons

SPECIAL FORCING VARIETIES

We offer below a selection of the best forcing varieties in this popular florists' flower. Only those which have proved to be the best sellers on the wholesale market are included.

Varieties preceded by an asterisk (*) are best for Early Winter Flowering.

***Better Times (Windmill)**. A real American Beauty rose-red color. Excellent for Christmas and St. Valentines Day. **Trade Pkt. \$2.**

Junglewood White (Junglewood Greenhouses). (New York Florists Club Silver Medal.) Pure white, deep green foliage; tall sturdy, whiplike stems; long spikes of closely set florets which do not drop for many days. Can be flowered as early as November from July sowing. $\frac{1}{2}$ trade pkt. \$1.25, trade pkt. \$2.

Junglewood Yellow. A rich yellow by the introducer of Junglewood White. Strong grower. $\frac{1}{2}$ trade pkt. \$1.25, trade pkt. \$2.

Lady Dorothy. (New York Florists Club Silver Medal.) Very attractive reddish bronze with florets spaced just right, making a long, graceful flower-spike. Early flowering. **Trade Pkt. \$3.**

***Hodaly's Ideal**. A blend of carmine shading into rich orange and lavender, tipped with lemon-yellow; good grower; strong, stiff stem. Large flowers, well-formed head. Blooms in four months from seed. **Trade Pkt. \$1.50.**

***Koster's White**. One of the best pure white Snaps. Vigorous grower, producing long and strong stems. **Trade Pkt. \$1.50.**

***Schafforth's Early Pink**. The outstanding pink Snap. Bright rose-pink, non-shattering. **Trade Pkt. \$2.**

***Christmas Cheer**. Free blooming, good stiff stems. Light rose-pink. **Trade Pkt. \$2.**

***Delworth's Supreme**. A deep rose selection from Cheviot Maid which will bloom for Christmas from a late June sowing. **Trade Pkt. \$1.50.**

STANDARD VARIETIES

BRONZE SHADES

***Glorious**. Brilliant bronzy scarlet. Early and free flowering. **Trade Pkt. \$1.**

Talisman. Double and semi-double blooms of medium size in both bronze and golden shades. An early and continuous bloomer. **Trade Pkt. \$2.**

***Afterglow**. Large bronze. **Trade Pkt. \$1.**

***Suntan**. Tan with yellow tip. **Trade Pkt. \$1.**

Terry's Surprise Improved. Rich rose, shaded bronze. **Trade Pkt. \$1.**

LAVENDER

Bertha Baur. Lavender-orchid. **Trade Pkt. \$1**

RED

Velvet Beauty. American Beauty red. **Trade Pkt. \$1.**

PINK and ROSE SHADES

***America**. Brilliant rose-pink with orange lip, blending into pure lemon. A real winter bloomer. **Trade Pkt. \$1.50.**

Marie Louise. Beautiful sea-shell-pink; very disease-resistant. **Trade Pkt. \$2.**

St. Louis Early Pink. Beautiful shade of luminous silvery pink that harmonizes well with other flowers. **Trade Pkt. \$1.50.**

***Cheviot Maid Supreme**. Dark rose-pink. **Trade Pkt. \$1.**

Maiden's Blush Improved. Light blush-pink. $\frac{1}{2}$ trade pkt. 85 cts., trade pkt. \$1.50.

Radiance. Large-flowered pink. **Trade Pkt. \$1**

Rose Queen. Dark pink. **Trade Pkt. \$1.**

WHITE

White Wonder Improved. One of the best forcing Snapdragons introduced. It is a really pure white with unusually strong, wiry stems. **Trade Pkt. \$1.50.**

Lucky Strike. Large flowering white. **Trade Pkt. \$1.**

Westover Fringed White. **Trade Pkt. \$1.**

GIANT-FLOWERING CYCLAMEN

ASMUSSEN'S STRAIN. This strain is unsurpassed in size, color, and substance. The germination of our seed is about 90 per cent.

Pure White.

White with Carmine Eye.

Light Salmon.

Dark Salmon.

Dark Red.

Cherry-Red.

Bright Fire (Christmas Color).

Each of the above: 100 seeds \$2.50, 250 seeds \$5.50, 1000 seeds \$20.

PRIMULA OBCONICA

Our improved strains outrival the old types, the flowers being considerably larger, often measuring 2 inches across.

Wyaston Wonder. Huge heads of immense crimson flowers, and the foliage is believed by the introducer to be non-poisonous. **Trade Pkt. 50 cts., 3 pkts. \$1.25, $\frac{1}{4}$ oz. \$2, $\frac{1}{2}$ oz. \$3.50.**

Orchid-Lavender. The flowers are exceptionally large and are a beautiful shade of orchid-lavender. **Trade Pkt. 50 cts., $\frac{1}{4}$ oz. \$2.50, $\frac{1}{2}$ oz. \$4, $\frac{1}{2}$ oz. \$7.**

Apple Blossom

Dark Rose

Sky-Blue

Crimson

Scarlet

Mixed

Each of the above: **Trade Pkt. 50 cts., $\frac{1}{4}$ oz. \$2.50, $\frac{1}{2}$ oz. \$4, $\frac{1}{2}$ oz. \$7, $\frac{1}{8}$ oz. \$12.**

Rosea Mueller. Bright rose. **Trade Pkt. 75 cts., $\frac{1}{4}$ oz. \$3, $\frac{1}{2}$ oz. \$5, $\frac{1}{2}$ oz. \$9.**

PRIMULA MALACOIDES Baby Primrose

Giant California Strain

These are strong, robust subjects for culture in pots in the greenhouse or conservatory. The flowers are exceptionally large and well formed.

DOUBLE VARIETIES

First Lady. White with slight tinge of pink, showing a high percentage of doubleness.

Cameo. Orchid-lavender. Flowers exceptionally large with high percentage of doubleness.

Double Fairy Jewels. Double flowers with a crested center, $\frac{3}{4}$ inch to 1 inch across; the color is a rich rose-pink, slightly lighter at the edges. From seed, one may expect well over 90 per cent double-flowering plants to be produced.

Double Twinkles. A beautiful shade of soft flesh-pink.

Double Mixture. Shows a good range of color including pink, white, light lavender and orchid-lavender.

Each of the preceding 5 varieties, **Trade Pkt. \$1.50.**

SINGLE VARIETIES

Enchantress. Soft, salmon-rose. **Trade Pkt. \$1.50.**

Lavender Glory. Soft lavender. **Trade Pkt. \$1.**

Snowflake. Pure white. **Trade Pkt. \$1.**

Sweetheart. Bright salmon-pink. **Trade Pkt. \$1.50.**

California Mixed. **Trade Pkt. \$1.**



Snapdragon

S. & W. Co.'s Sweet Peas

GENERAL LIST OF EARLY-FLOWERING VARIETIES



EARLY-FLOWERING SPENCER NOVELTIES

Grown especially for culture under glass.

The number of varieties of Early-flowering Sweet Peas that are now being offered has become so numerous that we have been obliged to make a careful survey of the kinds that are distinct in their color and also those that do best in the various parts of this country. The following list, we feel, covers this need quite well.

We suggest early sowing, that is in this section by mid-July, later farther south.

BALL ORANGE IMPROVED. Brilliant orange.

BALL ROSE IMPROVED. Free-flowering, bright glowing rose.

BRIDESMAID. Deep silvery pink; long stems.

DAPHNE. Soft salmon-pink on cream ground; four flowers to stem.

FIESTA. Strong self color, deep enough to be an orange-scarlet, sunproof.

PRINCESS BLUE. Rich belladonna-blue.

TAHOE. Beautiful shade of mid-blue.

TREASURE ISLAND. Golden orange, duplexed.

TRIUMPH. Beautiful soft lilac-mauve.

TWILIGHT. Bright clear lavender-lilac-mauve. Improvement on Harmony.

Each of the above, 1/2oz. 30 cts., oz. 50 cts., 1/4lb. \$1.50, lb. \$5.50.

AMERICAN BEAUTY. American-beauty-rose.

AMETHYST. Bright mauve-purple.

APOLLO. Soft salmon-pink.

ATTRACTION. Salmon-rose; long stemmed.

***BACCHUS.** Rich red-maroon, double standards.

BLUE DANUBE. Mid-blue self.

BOON. Deep salmon-pink on light cream ground.

COLUMBIA. Salmon-rose standard, white wings.

EILEEN. Begonia-rose.

***GARDENIA.** Best long-stemmed pure white for spring.

GRENADIER. Glowing scarlet, similar to the poppy.

***HARMONY.** Early-flowering lavender.

***HIAWATHA.** Strong grower. Deep rose; large flowered.

***HOPE.** Large-flowered, black-seeded pure white.

JEANNE MAMITSCH. Pink shaded deep pink.

JOSIE. Brilliant rose-pink; large flowered, long stems.

***LADDIE IMPROVED.** Light rose-pink; long stemmed.

MAJESTIC ROSE. Large deep rose-pink; long stemmed.

MICHIGAN. Large pure lavender.

MOTHER MACHREE. Beautiful blend of coral and golden rose.

***MRS. HERBERT HOOVER.** Best clear blue.

ORIENTAL. Black-seeded cream.

PRIDE. Cerise; long stemmed.

RHAPSODY. Rosy lavender.

***RHUMBA.** Glistening golden cerise.

SEQUOIA. Enormous rich golden cerise; long stems.

SHIRLEY TEMPLE. Soft rose-pink; long stems.

SNOWSTORM IMPROVED. Fine pure white; white seeded.

***SPARKS.** Bright orange-scarlet.

TITANIA. Mammoth flowers of deep rose.

***TOP HAT.** Deep velvety violet-blue.

***TOPS.** Delicate rose-pink.

TOP SERGEANT. Blood-red-crimson.

WHITE HARMONY. Pure white; black seeded.

Each of the above, 1/2oz. 30 cts., oz. 50 cts., 1/4lb. \$1.50, lb. \$5.50.

MIXED. Fine mixture of all colors, well balanced. 1/2oz. 25 cts., oz. 45 cts., 1/4lb. \$1.35, lb. \$5.

Varieties marked with an asterisk (*) are in our estimation the most dependable and satisfactory.

Special Flowers for Summer and Fall Sowing

MARIGOLDS

DWARF FRENCH DOUBLE HARMONY TYPE

Butterball. Soft butter-yellow, tipped with maroon.

Spry. Crested center of light yellow with maroon outer florets.

Scarlet Glow. Bright glowing fiery red.

Each of the above, 1/4oz. 35 cts., oz. \$1.25 1/4lb. \$4.

We suggest sowing about September 15. Grow warm, and they make ideal plants to use for winter combinations.

WINTER FLOWERING

Sawco Strain. Outer florets are beautiful mahogany, with a large pin-cushion center of golden yellow, suffused mahogany. Excellent for cutting. Grow in a cool-house, pinching once when plants are 8 to 10 inches high. 2 1/2 ft. Trade Pkt. 25 cts., 1/4oz. 60 cts., oz. \$2.

SCHIZANTHUS

Canadian Super-Giants. Blooms 2 inches across. Largest flowers of any strain in existence and have rich colorings and unusual markings. Trade Pkt. \$1, 3 pkts. \$2.50.

Stumpp & Walter Co.'s Giant-Flowering Hybrids, Mixed. Trade Pkt. 25 cts., 1/8oz. 60 cts., 1/4oz. \$1, oz. \$3.50.

KALANCHOE

Tom Thumb. A succulent, recommended for greenhouse cultivation on account of the long period in which it continues to bloom, and its marvelous brilliant scarlet color. Excellent for dish gardens and terrariums. Early flowering. Trade Pkt. \$2.50., 1/64oz. \$5, 1/32oz. \$9.

FREESIA

Multiflora Giant Mixed. This strain is a very large-flowered mixture containing many bright colors, and is far superior to the original rainbow mixture. Trade Pkt. 50 cts., 1/8oz. \$1, 1/4oz. \$1.50, oz. \$5.

NEW YORK 8, N. Y.

(Corner of Warren Street)

132-138 Church Street,

STUMPP & WALTER CO.,

First Class Permit No. 1373, Sec. 510, P. L. & R., New York, N. Y.

BUSINESS REPLY ENVELOPE

No
Postage Stamp
Necessary
If Mailed in the
United States

Postage
Will Be Paid
by
Addressee



Selected List of the Most Popular Perennials

FOR COMPLETE LIST PLEASE REFER TO OUR GENERAL CATALOG

ALYSSUM

Saxatile compactum. Perennial. Yellow. $\frac{1}{4}$ oz. 30 cts., oz. \$1, $\frac{1}{4}$ lb. \$3.50.

ANEMONE

HARDY PERENNIAL

Giant De Caen. Giant French. Trade Pkt. 25 cts., $\frac{1}{4}$ oz. 75 cts., oz. \$2.50.

St. Brigid. Double and semi-double; various colors. Trade Pkt. 25 cts., $\frac{1}{4}$ oz. 60 cts., oz. \$2.

AQUILEGIA . Columbine

These early-flowering perennials are valuable cut-flowers.

Sawco Colossal. Outstanding mixture. The enormous flowers measure about $5\frac{1}{2}$ inches across and are exceptionally long spurred. Trade Pkt. 50 cts., $\frac{1}{8}$ oz. \$1.50, $\frac{1}{4}$ oz. \$2.50.

S. & W. CO.'S GIANT LONG-SPURRED HYBRIDS. The plants are of strong, thrifty growth and are perfectly hardy and bear long-spurred flowers of large size. A superior strain. **Blue Shades, Pink Shades, Scarlet Shades, Mixed Shades.**

Each of the above shades, trade pkt. 50 cts., $\frac{1}{8}$ oz. \$1, $\frac{1}{4}$ oz. \$1.50, oz. \$5.

Cœrulea. Violet-blue and white. Trade Pkt. 25 cts., $\frac{1}{4}$ oz. \$1, oz. \$3.50.

Longissima Hybrids. Extra long spurs and broad petals. Mostly red, blue, white, and rose. Trade Pkt. 50 cts., 3 pkts. \$1.25.

BELLIS . English Daisy

Giant Flowering Pink, White or Mixed. Each, Trade Pkt. 50 cts., $\frac{1}{8}$ oz. \$1, $\frac{1}{4}$ oz. \$1.75, oz. \$6.

Double Red Quilled. Trade Pkt. 50 cts., $\frac{1}{8}$ oz. \$1.25, $\frac{1}{4}$ oz. \$2, oz. \$7.50.

CAMPANULA . Bellflower

PERENNIAL

Used extensively as border plants. Tall varieties are excellent for cutting.

Carpatica. Blue; dwarf. 6 in. $\frac{1}{4}$ oz. 25 cts., oz. 75 cts., $\frac{1}{4}$ lb. \$2.50.

Carpatica alba. White. Dwarf. 6 in. $\frac{1}{4}$ oz. 25 cts., oz. 75 cts., $\frac{1}{4}$ lb. \$2.50.

Persicifolia grandiflora, Blue. Grows 3 to 4 feet high; excellent for cutting. Trade Pkt. 25 cts., $\frac{1}{4}$ oz. 60 cts., oz. \$2.

Persicifolia grandiflora alba. White. Trade Pkt. 25 cts., $\frac{1}{4}$ oz. 60 cts., oz. \$2.

Pyramidalis. Blue. Trade Pkt. 25 cts., $\frac{1}{4}$ oz. 50 cts., oz. \$1.75.

Pyramidalis. White. Trade Pkt. 15 cts., $\frac{1}{4}$ oz. 35 cts., oz. \$1.25.

Campanula Medium. Canterbury Bells. Biennial. Will bloom the first year if sown early. **Single White, Rose, Light Blue, Dark Blue, Single Mixed and Double Mixed.** Each $\frac{1}{4}$ oz. 30 cts., oz. \$1, $\frac{1}{4}$ lb. \$3.50.

Campanula calycanthema. Cup and Saucer. **White, Rose, Light Blue, Dark Blue, Mixed.** Each, Trade Pkt. 25 cts., $\frac{1}{4}$ oz. 60 cts., oz. \$2.

COREOPSIS

Grandiflora, Double Sunburst. Grows 2 feet high with large double flowers $3\frac{1}{2}$ inches across. Rich yellow. $\frac{1}{4}$ oz. 25 cts., oz. 75 cts., $\frac{1}{4}$ lb. \$2.50.

Mayfield Giant. Intense yellow, large single flowers. $\frac{1}{4}$ oz. 15 cts., oz. 50 cts.

HARDY CARNATION

Dwarf Grenadin, Scarlet. An ideal variety for basket work, growing 12 to 14 inches high with double flowers of bright scarlet. Trade Pkt. 50 cts., $\frac{1}{8}$ oz. \$1, $\frac{1}{4}$ oz. \$1.50, oz. \$5, $\frac{1}{4}$ lb. \$17.50.

SHASTA DAISIES

PERENNIAL

Giant Double White. Remarkable for its resemblance to the Asters. Blooms average 5 inches in diameter on long, wiry straight stems. Seedlings flower five months after sowing. Trade Pkt. 50 cts., 3 pkts. \$1.25, $\frac{1}{8}$ oz. \$2, $\frac{1}{4}$ oz. \$3.50.

Alaska. Pure white flower, 5 inches across. $\frac{1}{4}$ oz. 35 cts., oz. \$1.25, $\frac{1}{4}$ lb. \$4.

DIANTHUS

Plumarius, Single Mixed. Large, fragrant flowers. $\frac{1}{4}$ oz. 35 cts., oz. \$1.25.

Plumarius, Double Mixed. Double, fringed, fragrant flowers of all colors, spotted and variegated. Trade Pkt. 25 cts., $\frac{1}{4}$ oz. 60 cts., oz. \$2.

GAILLARDIA

Burgundy. A new color—brilliant coppery scarlet self—and of special value to the grower of cut-flowers. Hardy perennial, but will flower the first season if sown early under glass. Trade Pkt. 25 cts., $\frac{1}{4}$ oz. 60 cts., oz. \$2, $\frac{1}{4}$ lb. \$7.50.

The Dazzler. The largest and most attractive giant red Gaillardia. Flowers have a bright orange tip on the end of each floret. Trade Pkt. 25 cts., $\frac{1}{4}$ oz. 50 cts., oz. \$1.50, $\frac{1}{4}$ lb. \$5.

Portola Hybrids. The flowers are enormous, and the color-range is fairly wide, centering around reddish bronze and gold. Plants particularly robust. Trade Pkt. 25 cts., $\frac{1}{4}$ oz. 50 cts., oz. \$1.50, $\frac{1}{4}$ lb. \$5.

Tangerine. A great improvement over the original although still variable. Contains a large percentage of the true Tangerine. May be described as a medium-sized flower of various shades of tangerine-orange. Trade Pkt. 25 cts., $\frac{1}{4}$ oz. 50 cts., oz. \$1.50, $\frac{1}{4}$ lb. \$5.

HOLLYHOCKS

Chater's Superb Double. A splendid strain.

**Newport Pink
Scarlet
Deep Rose
Pure White
Sulphur-Yellow
Salmon-Rose
Mixed.**

Any of the above: Trade Pkt. 25 cts., $\frac{1}{4}$ oz. 75 cts., oz. \$2.50.

Double Orange Prince. Flowers are large and of a brilliant apricot-orange hue. Trade Pkt. 25 cts., $\frac{1}{4}$ oz. \$1, oz. \$3.50.

Double Exquisite. Flowers large and beautifully fringed and frilled, and their colors are charming. Trade Pkt. 25 cts., $\frac{1}{4}$ oz. 75 cts., oz. \$2.50.

S. & W. Co.'s Single Mixed. $\frac{1}{4}$ oz. 25 cts., oz. 75 cts., $\frac{1}{4}$ lb. \$2.50.

GYPSOPHILA

Paniculata. Single white. $\frac{1}{4}$ oz. 15 cts., oz. 50 cts., $\frac{1}{4}$ lb. \$1.50.

Paniculata fl.-pl. Double form of the above. Trade Pkt. 50 cts., $\frac{1}{8}$ oz. \$1, $\frac{1}{4}$ oz. \$1.50, oz. \$5.

Repens. Dwarf; white. Trade Pkt. 25 cts., $\frac{1}{4}$ oz. \$1, oz. \$3.50.

LUPINUS

Russell Lupins. We offer the new English super-strain. Mixture of unusual hybrids. Trade Pkt. 25 cts., $\frac{1}{4}$ oz. 75 cts., oz. \$2.50.

Polyphyllus. Blue Shades, White, Pink Shades, Mixed. Each, Trade Pkt. 25 cts., $\frac{1}{4}$ oz. 75 cts., oz. \$2.50.

PRIMULA

Veris Mixed. (English Cowslip.)

Vulgaris. (True English Primrose.) Canary-yellow, fragrant. Each of the above: Trade Pkt. 50 cts., $\frac{1}{8}$ oz. \$2, $\frac{1}{4}$ oz. \$3.50.

PYRETHRUM

Single Hybrids. This is a specially grown strain of this splendid hardy perennial for cutting. Colors palest pink to deep red, yellow centers forming a splendid contrast. Trade Pkt. 25 cts., $\frac{1}{8}$ oz. 75 cts., $\frac{1}{4}$ oz. \$1.25, oz. \$4.

Double Hybrids. A double form of the above. Trade Pkt. 50 cts., $\frac{1}{8}$ oz. \$1, $\frac{1}{4}$ oz. \$1.75, oz. \$6.

SCABIOSA

Caucasica Giant Hybrids (Isaac House Strain). 3 ft. Ideal variety for cutting, large flowers on long, stiff stems. The colors range through lilac, lavender, violet, purple, mauve, light and dark blue and white. Trade Pkt. 25 cts., $\frac{1}{8}$ oz. 75 cts., $\frac{1}{4}$ oz. \$1.25, oz. \$4.50.

Caucasica. Light blue. Trade Pkt. 25 cts., $\frac{1}{4}$ oz. 60 cts., oz. \$2.

SWEET WILLIAM

Dianthus barbatus

Single Dark Crimson. Trade Pkt. 25 cts., $\frac{1}{4}$ oz. 60 cts., oz. \$2.

Single White. Trade Pkt. 25 cts., $\frac{1}{4}$ oz. 60 cts., oz. \$2.

Tall Single, Mixed. $\frac{1}{4}$ oz. 20 cts., oz. 60 cts., $\frac{1}{4}$ lb. \$2.

Tall, Double, Mixed. Trade Pkt. 25 cts., $\frac{1}{4}$ oz. 50 cts., oz. \$1.50, $\frac{1}{4}$ lb. \$5.

Dwarf Single, Mixed. Trade Pkt. 25 cts., $\frac{1}{4}$ oz. 60 cts., oz. \$2.

Holborn Glory. Large flowers; finest shades, distinct, large eye. Trade Pkt. 25 cts., $\frac{1}{4}$ oz. 60 cts., oz. \$2.

Newport Pink. The finest salmon-rose. Trade Pkt. 25 cts., $\frac{1}{4}$ oz. 60 cts., oz. \$2.

Scarlet Beauty. The finest single deep scarlet. Trade Pkt. 25 cts., $\frac{1}{4}$ oz. 60 cts., oz. \$2.

Sweet William, Dwarf Double Mixed. A special selected strain of this popular flower growing only 6-9 inches high. It is an excellent variety for basket work. Contains a very fine range of colors. Trade Pkt. 25 cts., $\frac{1}{4}$ oz. 50 cts., oz. \$1.75, $\frac{1}{4}$ lb. \$6, lb. \$20.

VIOLA

CORNUTA (Tufted Pansies).

Blue Gem (Jersey Gem). Compact, deep violet-blue. Trade Pkt. 50 cts., $\frac{1}{8}$ oz. \$1.75, $\frac{1}{8}$ oz. \$3, $\frac{1}{4}$ oz. \$5, oz. \$17.50.

Lutea splendens. Chrome-yellow.

White Perfection. Pure white.

Each of the above: Trade Pkt. 50 cts., $\frac{1}{8}$ oz. \$1.25, $\frac{1}{4}$ oz. \$2.

LARGE-FLOWERED

Arkwright Ruby. Terra-cotta on crimson. Trade Pkt. 50 cts., $\frac{1}{8}$ oz. \$1.25, $\frac{1}{8}$ oz. \$2, $\frac{1}{4}$ oz. \$3.50.

Blue Butterfly. Mid-blue shading to white. Trade Pkt. 50 cts., $\frac{1}{8}$ oz. \$1.25, $\frac{1}{4}$ oz. \$2.

Chantryland. Bright apricot-orange. Trade Pkt. 50 cts., $\frac{1}{8}$ oz. \$1.25, $\frac{1}{8}$ oz. \$2, $\frac{1}{4}$ oz. \$3.50.

Finest Mixed. All colors. Trade Pkt. 50 cts., $\frac{1}{8}$ oz. \$1.25, $\frac{1}{4}$ oz. \$2.

Florist Supplies

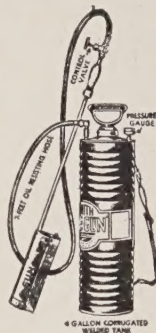
Nutrient-Treated Plant Bands

Vita-Band 40. 40-week growing period. 1000	
1 3/4 x 1 3/4 x 2 1/2.....	\$4 25
2 x 2 x 2 1/2.....	4 70
2 x 2 x 3.....	5 05
2 1/2 x 2 1/2 x 3.....	5 20
3 x 3 x 3.....	6 30
3 x 3 x 4.....	7 35

Vita-Band 10. 10-12-week growing period. 1000	
1 3/4 x 1 3/4 x 2 1/2.....	\$2 90
2 x 2 x 2 1/2.....	3 25
2 x 2 x 3.....	3 75
2 1/2 x 2 1/2 x 3.....	4 15
3 x 3 x 3.....	4 55
3 x 3 x 4.....	5 90

Sawco Flame Gun

For burning weeds, disinfecting poultry houses, thawing frozen pipes, melting ice and snow, splitting large rocks and boulders, burning tree stumps, sterilizing infected soil, destroying weeds in stone walls, driveways, tennis courts, destroying insect pests such as grasshoppers, locusts, caterpillars, chinch-bugs, etc. \$21.50.



Wayahead. Special heavy duty. Surpasses all the cheaper grades of Hose. A two-braid Hose with a smooth black cover. 3/4-in. bore, 25 ft. \$7, 50 ft. \$13, 100 ft. \$24.

Plant Stakes

For staking Chrysanthemums, Lilies and Poinsettias in the greenhouse.

Galvanized Wire Stakes.	100
3-ft.....	\$2 00
4-ft.....	3 00
5-ft.....	3 50

Sawco Garden Gloves



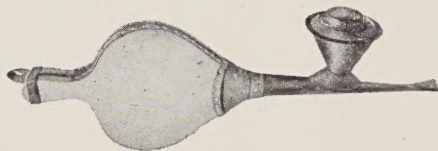
Horsehide Gloves. Very strong; for heavy garden work and pruning. Sizes 10 and 11. \$2 per pair.

Bird Flower Pots

RED (For Shipping).	1000
2 inch.....	\$6 00
2 1/4 inch.....	6 00
2 1/2 inch.....	6 10
3 inch.....	6 85
3 1/2 inch.....	9 15
4 inch.....	10 40
5 inch.....	13 30
6 inch.....	16 90

GREEN (For Growing).	1000
2 inch.....	\$8 75
2 1/4 inch.....	8 75
2 1/2 inch.....	9 40
3 inch.....	10 60
3 1/2 inch.....	14 05
4 inch.....	16 55
5 inch.....	22 85
6 inch.....	29 30

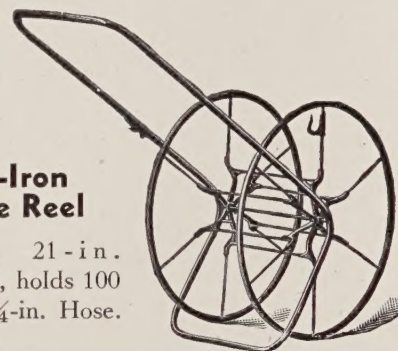
Woodason's Bellows



For dusting plants with dry powders. **Single Cone.** Small size \$4.50, large size \$6.

All-Iron Hose Reel

No. 20. 21-in. Wheel, holds 100 feet 3/4-in. Hose. \$9.25.



Insecticides

Rotene Insect Spray



Non-poisonous rotenone-thiocyanate-spray. Harmless to fruits, vegetables and flowers, humans and animals. For chewing and sucking insects. A teaspoonful to 1 gal. water, 1 oz. to 8 gals. Qt. \$3.50, gal. \$11.50.

Tartar Emetic (For Gladiolus Thrip)

Mix 1 lb. with 4 lbs. brown sugar and dilute in 25 gals. water. Lb. pkg. \$1.

Cyanogas



Cyanogas G Fumigant. Generates deadly hydrocyanic acid gas. Controls aphids, thrips, white fly. Scatter on greenhouse walks and close the house for the night. 5 lbs. \$3, 25 lbs. \$10, 100 lbs. \$25.

D. N. Dust No. 12

A dust for spider mite control on carnations, gardenias, snapdragons, calla lilies and roses. One pound will dust 400 to 800 square feet of greenhouse space. 10-lb. pkg. \$4.50.



Loro

Contact insecticide for the control of red spider, mealy bug, white flies, thrips, aphids and chrysanthemum midge. Simply mix with water as directed. Do not use on Roses or Citrus Trees. Pt. \$2, gal. \$11.50.

D. D. T. Wettable Powder

Contains 50% D.D.T. Controls codling moth, gipsy moth, tent caterpillar, Japanese beetle, potato beetle, and thrips. Also flies and ticks on cows, horses, sheep, and goats, and as a general spray in the barn. Lb. \$1, 4 lbs. \$3.50, 48 lbs. \$30.